



Electricity V-2.0
A visible, transparent and interactive version of electricity.



[Home](#)
[News](#)
[Guest Column](#)
[Taking Stock](#)
[Skyline](#)
[Projects](#)
[Launches](#)
[Interior](#)

[Tech take](#)
[Interviews](#)
[Sujeet Gallery](#)
[Videos](#)

Home > slider > [NBCC built Gramalya inaugurated by Haryana C.M.](#)

NBCC built Gramalya inaugurated by Haryana C.M.

Former President of India Sh. Pranab Mukherjee and Haryana Chief Minister Shri Manohar Lal Khattar recently inaugurated 'Gramalya' – Gram Sachivalaya at Harchandpur village in Haryana.

Harchandpur village is one of the selected villages under the 'SMARTGRAM' – smart model villages, which is an initiative of the Rashtrapati Bhavan. The project has been implemented by NBCC (India) Ltd., a state-owned Navratna public sector undertaking, under its CSR endeavour at cost of Rs. 34 lacs approximately.

NBCC has used Novel Habitech- Nivara Tantra housing technology, which apart from being a unique confluence of technology for ecological and affordable construction, is also disaster resilient.



Talegaon ka Icon nahi dekha to kya dekha.

Ad Premium 1 & 2 BHK Homes starting 26.4 Lacs only. See it before you make a decision.

Namrata Group's Aikonic

OPEN

Initiated by the former President of India, the SMARTGRAM initiative is to enable the local villagers, especially the economically weaker sections and low income group communities to empower themselves in accomplishing their aspiration of constructing a dwelling on their own which is comparable to the best in class modern structure and yet sustainable and affordable.

The Gramalya has been designed to cater to not only the routine functioning of the Gram Panchayat official activities, but shall also enable the local villagers to showcase their products and produce along with space for activities. The building also houses a library and commercial office space.

It is worth mentioning that NBCC in its various social and community initiatives has also earlier constructed a four-storeyed hostel for the widows of Navy personnel. At Betul in Madhya Pradesh, it is constructing a Sainik rest house to serve as a focal point for all welfare activities related to ex-servicemen, war widows and their dependents.

[Haryana C.M., Haryana real estate, NBCC](#)

Related Posts



Realty Bytes: 1.9 million sq. ft. of fresh retail supply added during H1, 2018; global retailers increase their footprint: CBRE research

September 4, 2018

Popular Posts



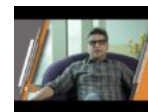
India's real est sector on a growth trajectory: FIC Report

September 7, 2018



Ramesh Nair, Country Head India wishing & More on dig launch!

April 22, 2018



Neeraj Gulati, Assotech Real wishing Realty More on digi: launch!

April 22, 2018



Jai Guru Dev – post

April 22, 2018

India's real estate sector on a growth trajectory: FICCI – JLL Report

September 7, 2018

Contemporary Style meets Timeless Elegance – OMA Living Launches The Flagship Store at M.G. Road, New Delhi

September 6, 2018

« Realty Bytes: 1.9 million sq. ft. of fresh retail supply added during H1, 2018; global retailers increase their footprint: CBRE research

Contemporary Style meets Timeless Elegance – OMA Living Launches The Flagship Store at M.G. Road, New Delhi »

Leave a Reply

Your email address will not be published. Required fields are marked *

Comment

Name *

Email *

Website

Post Comment

Copyright © All rights reserved.